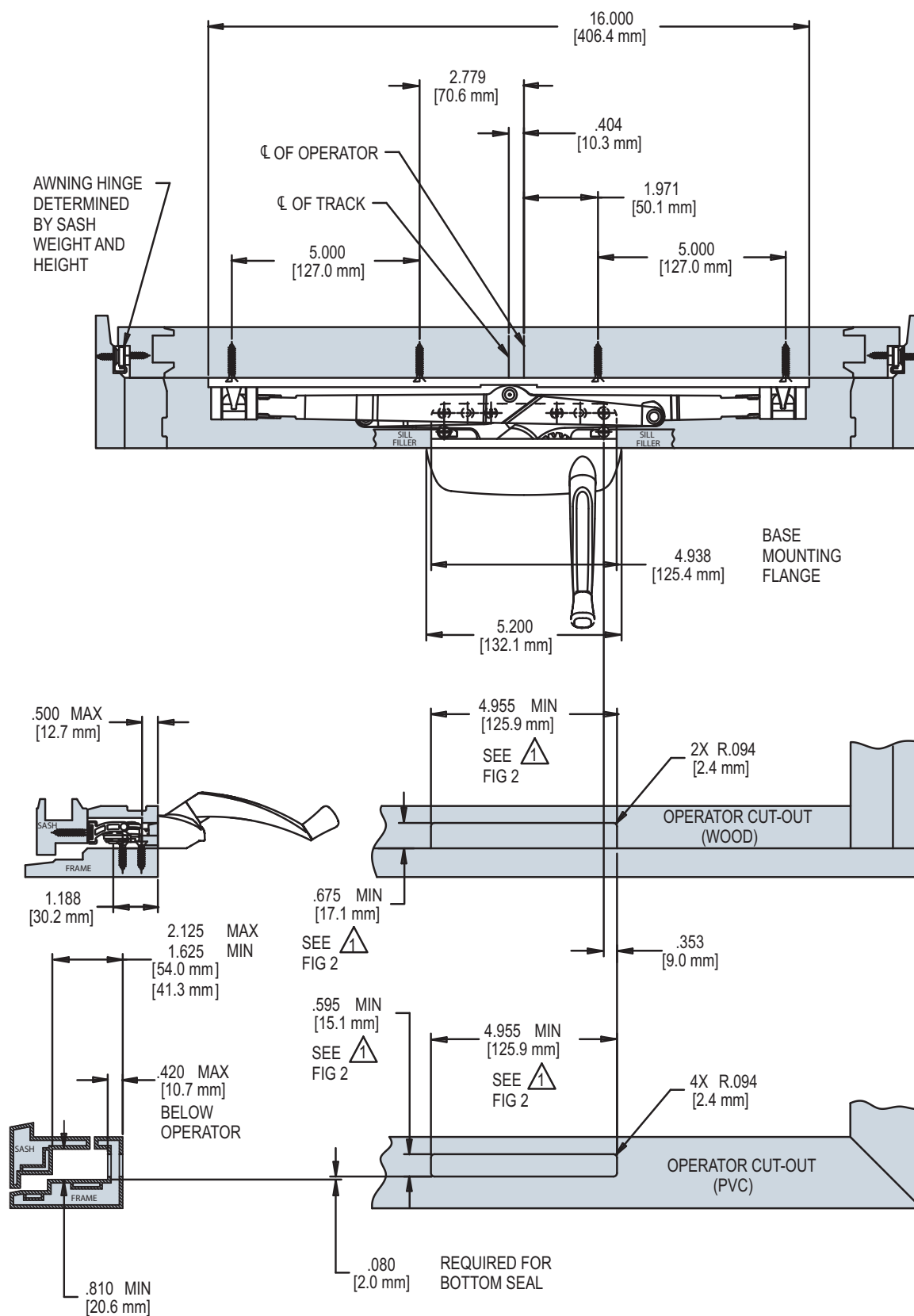
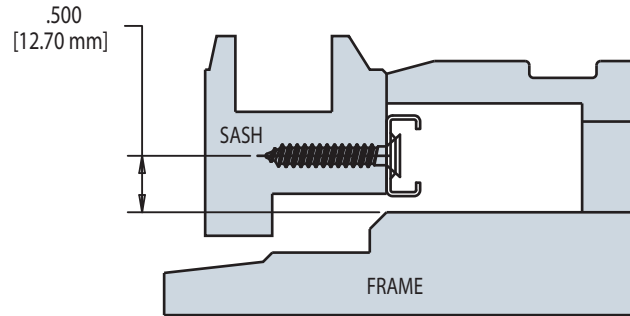


# MAXIM® AWNING OPERATOR (SILL MOUNT)

FIG. 1 APPLICATION OF STANDARD MAXIM AWNING OPERATOR (SILL MOUNT VERSION)



**FIG. 2 APPLICATION OF STANDARD MAXIM AWNING OPERATOR (CONTINUED)  
(SILL MOUNT VERSION)**



**11577.92  
TRACK PLACEMENT**

HARDWARE SHOWN, SEE FIG.1	
PART NUMBER	DESCRIPTION
51.00.XX.011	AWNING OPERATOR
11577.92	TRACK ASSEMBLY
13.XX.XX.XXX	HINGE
11454.XX	CONTOUR HANDLE
31882	GASKET (PVC)

NOTE:

1. HOLD THIS DIMENSION AS CLOSE TO THE MINIMUM AS MANUFACTURING TOLERANCES ALLOW. A CLOSE FITTING CUT-OUT HELPS TO STABILIZE THE OPERATOR AGAINST ROCKING

2. GASKET 31882 IS REQUIRED ON PVC AND METAL PROFILES FOR AN IMPROVED AIR AND WATER SEAL

# MAXIM® AWNING OPERATORS (SILL MOUNT)

**FIG. 3 STANDARD MAXIM AWNING OPERATOR (SILL MOUNT VERSION)**

STAINLESS STEEL VERSION AVAILABLE

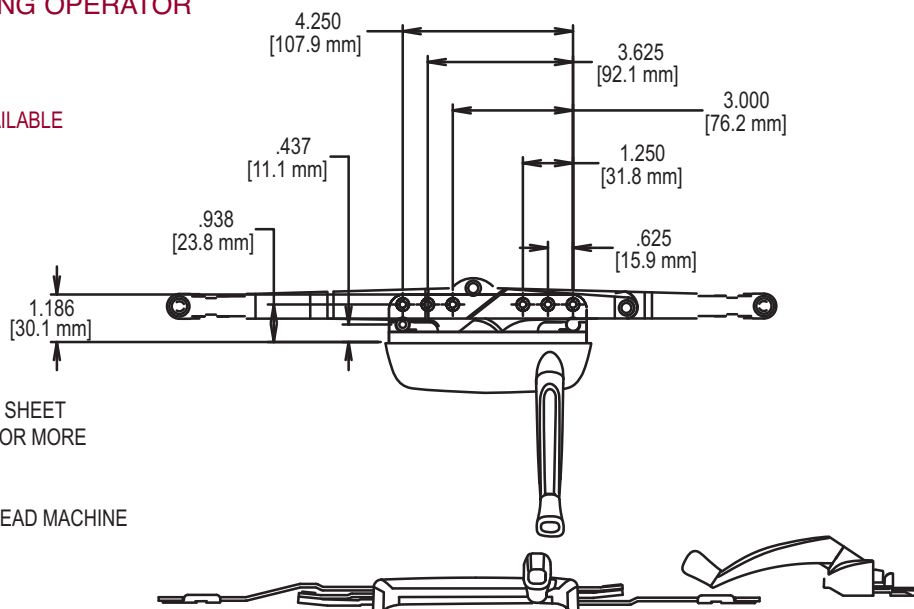
51.00.XX.011 SHOWN

51.02 REAR MOUNT VERSION ALSO AVAILABLE

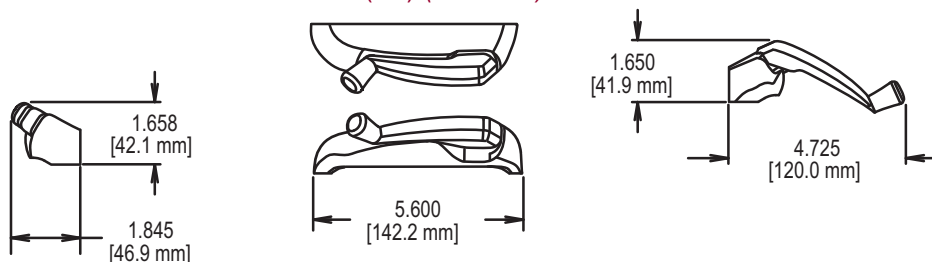
RECOMMENDED SCREWS:

(QTY 6)(PN 19240.XX)#8 X 1 FLAT HEAD SHEET METAL SCREW (SEE TRUTH TIPS FOR MORE INFORMATION)

(QTY 2)REAR MOUNT:#8-32 X 3/8 PAN HEAD MACHINE SCREW PN 19545.XX

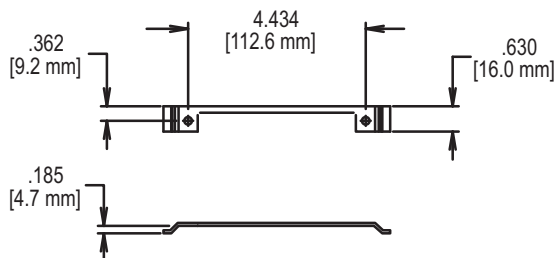


**FIG. 4 MAXIM COVER 41211.XX /HANDLE 11329.XX (LH) (SHOWN)**



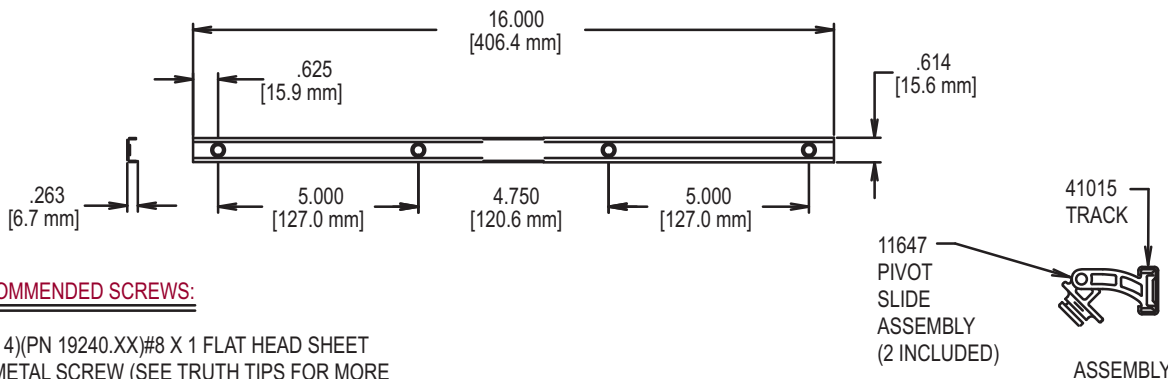
**FIG. 5 BACK PLATE 23058.92**

FOR USE WITH 51.02 REAR MOUNT VERSION ONLY



**FIG. 6 MAXIM AWNING TRACK & SLIDER ASSEMBLY 11577.92**

STAINLESS STEEL VERSION AVAILABLE



RECOMMENDED SCREWS:

(QTY 4)(PN 19240.XX)#8 X 1 FLAT HEAD SHEET METAL SCREW (SEE TRUTH TIPS FOR MORE INFORMATION)