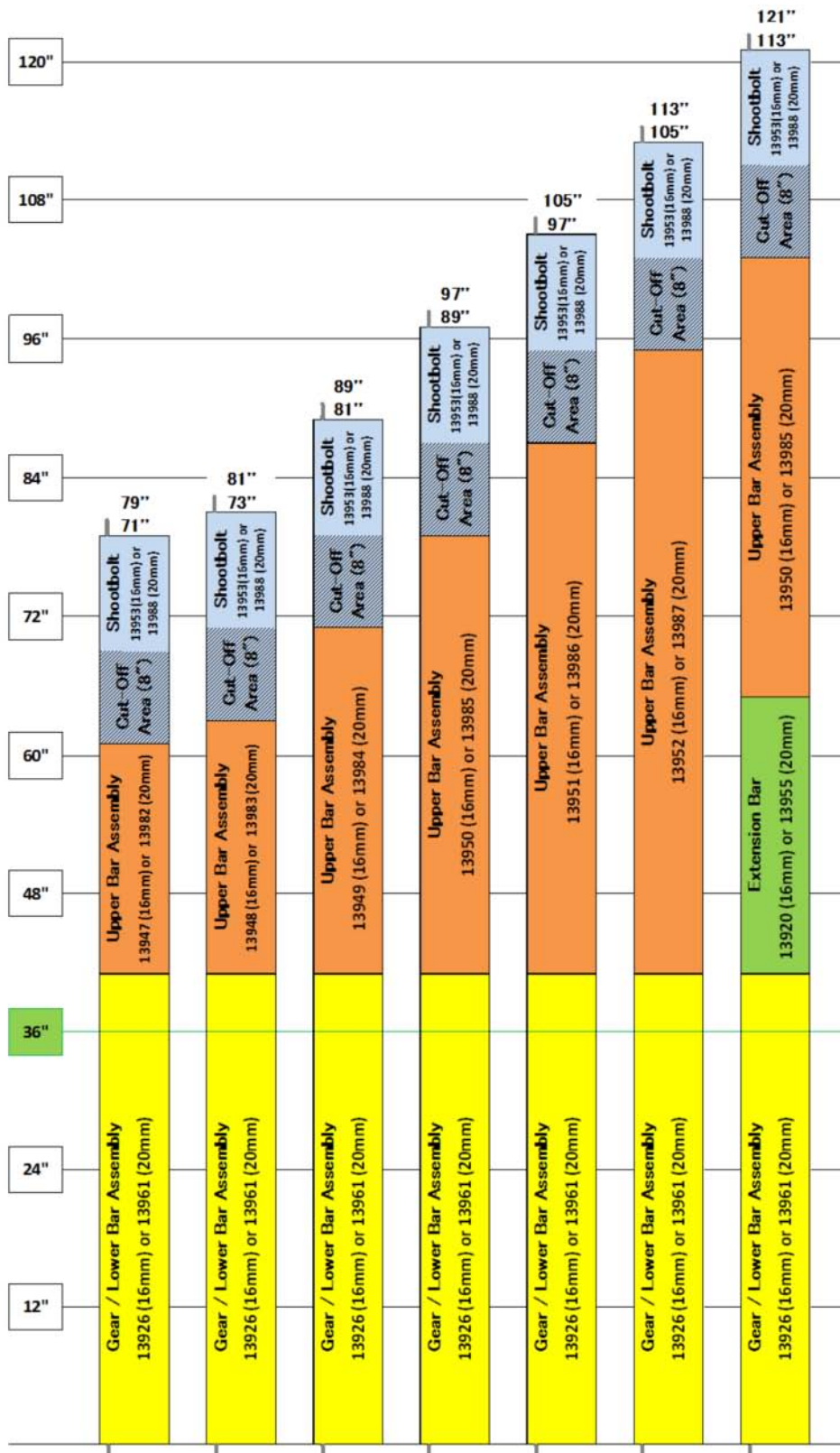
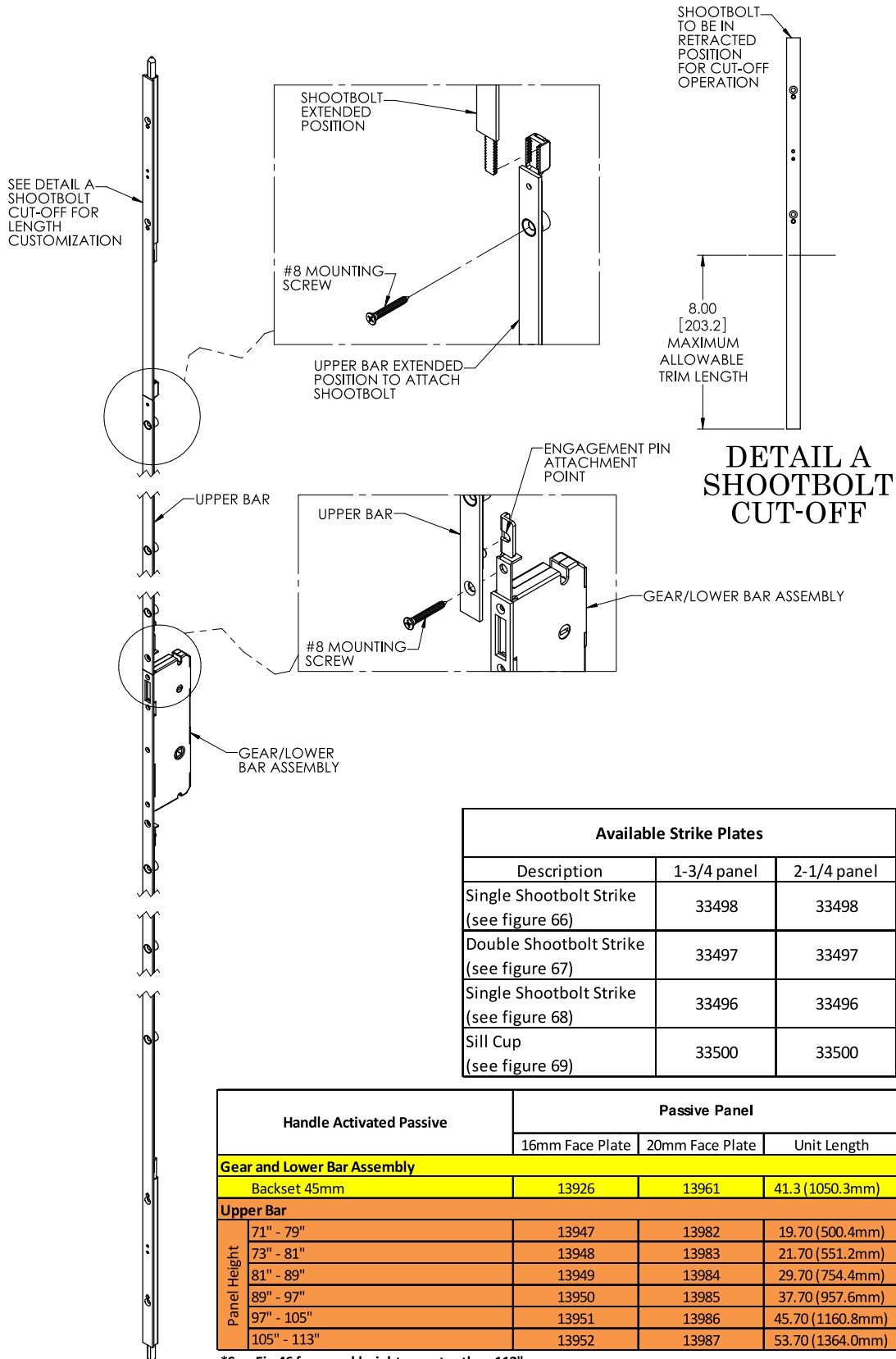


# SENTRY™ MULTI-POINT HINGED PATIO DOOR SYSTEM

FIG. 44 SENTRY HINGED PATIO DOOR LOCKS  
HANDLE ACTIVATED PASSIVE CONFIGURATION MATRIX

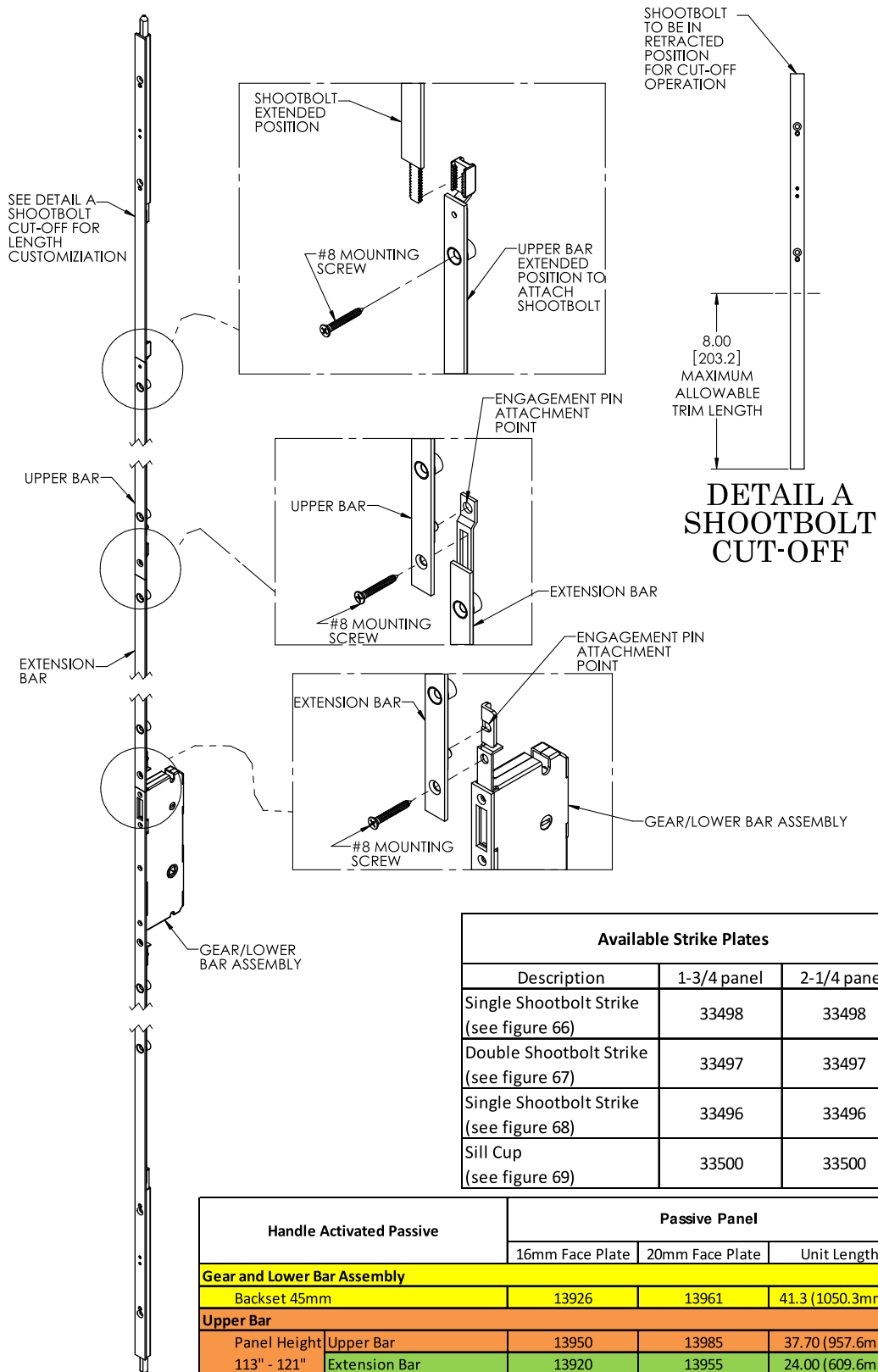


**FIG. 45 SENTRY HINGED PATIO DOOR LOCKS  
HANDLE ACTIVATED PASSIVE ASSEMBLY FOR PANELS 71" TO 113"**



# SENTRY™ MULTI-POINT HINGED PATIO DOOR SYSTEM

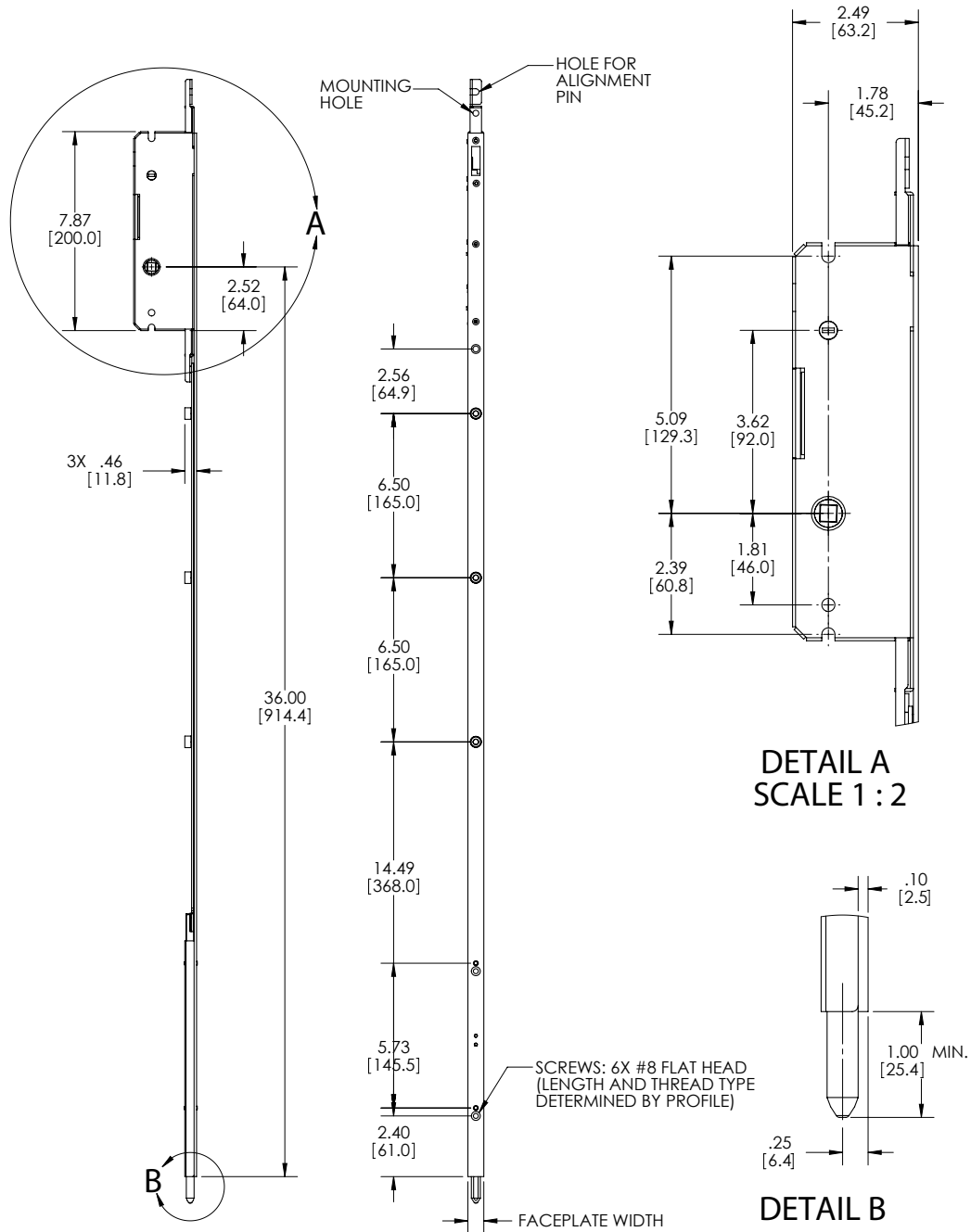
FIG. 46 SENTRY HINGED PATIO DOOR LOCKS  
HANDLE ACTIVATED PASSIVE ASSEMBLY FOR PANELS 113" TO 121"



Available Strike Plates		
Description	1-3/4 panel	2-1/4 panel
Single Shootbolt Strike (see figure 66)	33498	33498
Double Shootbolt Strike (see figure 67)	33497	33497
Single Shootbolt Strike (see figure 68)	33496	33496
Sill Cup (see figure 69)	33500	33500

Handle Activated Passive	Passive Panel			
	16mm Face Plate	20mm Face Plate	Unit Length	
<b>Gear and Lower Bar Assembly</b>				
Backset 45mm	13926	13961	41.3 (1050.3mm)	
<b>Upper Bar</b>				
Panel Height	Upper Bar	13950	13985	37.70 (957.6mm)
113" - 121"	Extension Bar	13920	13955	24.00 (609.6mm)

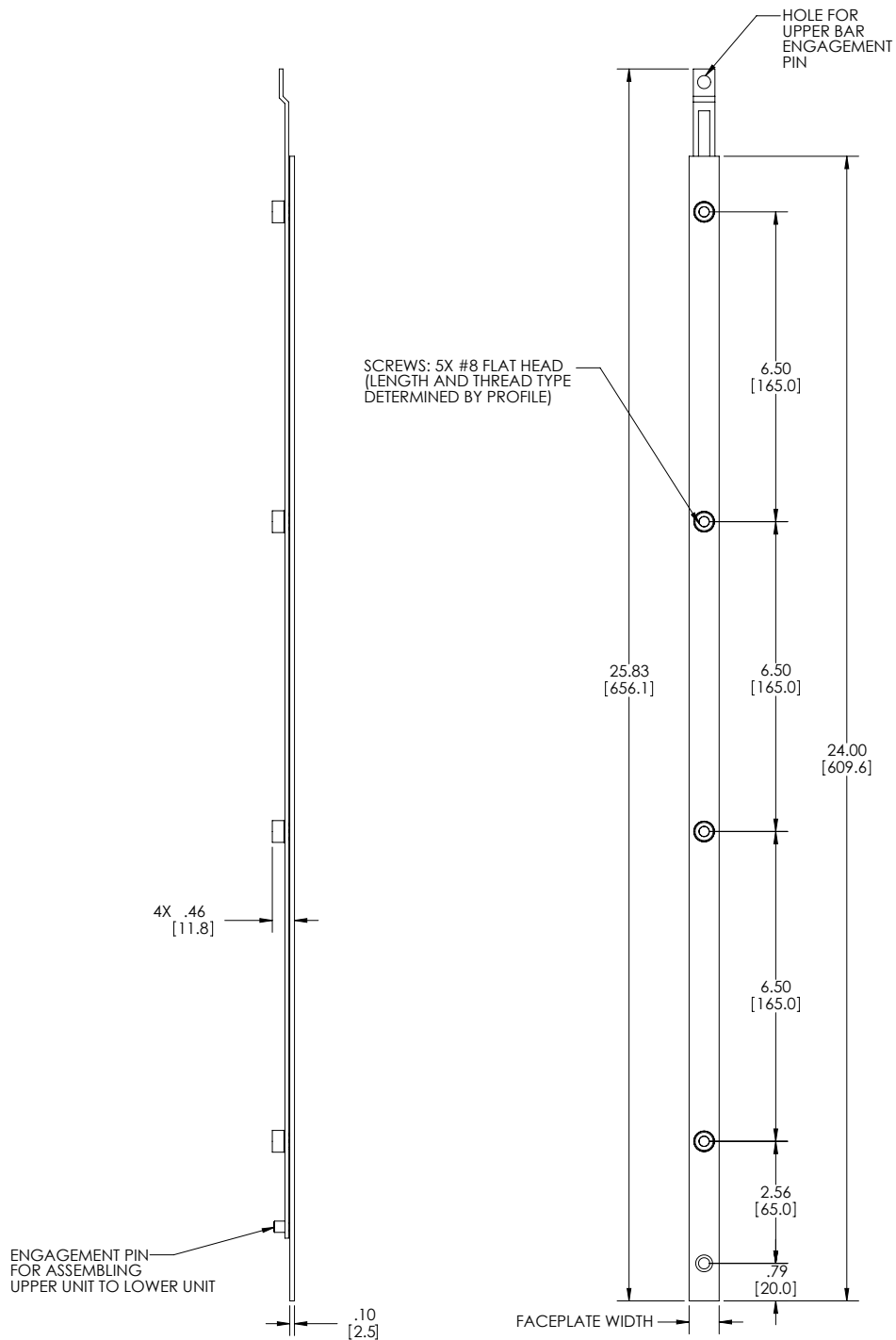
**FIG. 47 SENTRY HINGED PATIO DOOR LOCKS  
HANDLE ACTIVATED PASSIVE GEAR AND LOWER BAR ASSEMBLY**



<b>Gear and Lower Bar Assembly</b>	
16mm Face Plate	20mm Face Plate
13926	13982



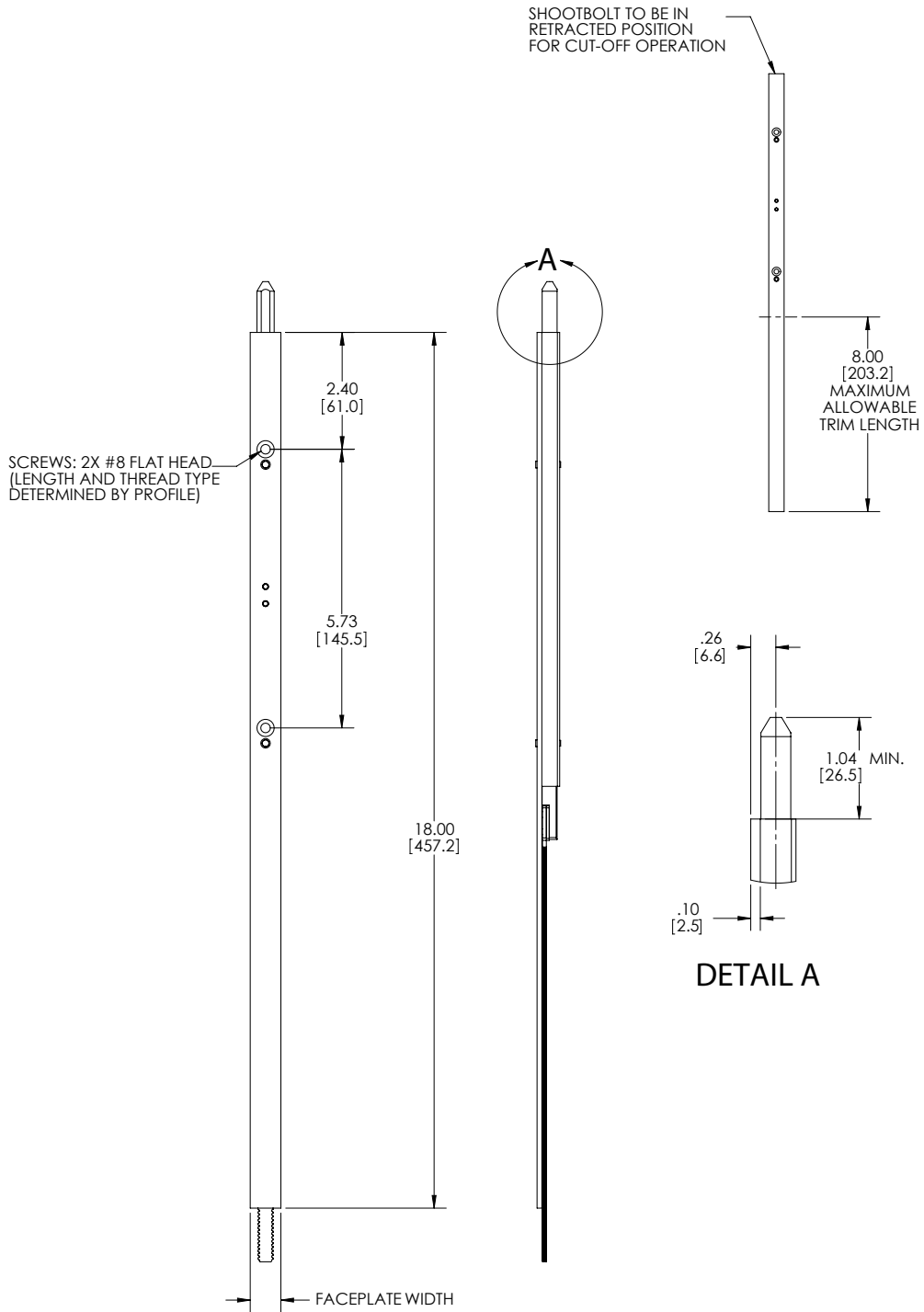
**FIG. 49 SENTRY HINGED PATIO DOOR LOCKS  
EXTENSION BAR ASSEMBLY**



Extension Bar	
16mm Face Plate	20mm Face Plate
13920	13955

# SENTRY™ MULTI-POINT HINGED PATIO DOOR SYSTEM

FIG. 50 SENTRY HINGED PATIO DOOR LOCKS  
SHOOTBOLT ASSEMBLY



Shootbolt	
16mm Face Plate	20mm Face Plate
13953	13988

FIG. 51 SENTRY HINGED PATIO DOOR LOCKS  
13954 COVER PLATE

